



RESEARCH

NOVAFCSH



WHO WE ARE

NOVA School of Social Sciences and Humanities (NOVA FCSH) is part of NOVA University Lisbon (UNL), a Portuguese higher education institution. NOVA FCSH opened its doors in 1978, and, since then, has been committed to promoting excellence in teaching and research in Social Sciences, Humanities and Arts, while nurturing, hand in hand, a humanistic culture that echoes beyond the limits of our campi. This compromise is core to our relationship with society, through strategic partnerships, knowledge transfer and community engagement activities, or service provision in our fields of expertise.

NOVA FCSH sees education and research as inextricably linked and, therefore, it actively engages with the actors and players that constitute the National Scientific and Technological System (SNCT), and are central to scientific development, knowledge creation and innovation, as well as teaching. SNCT is an intricate and interrelated ecosystem, with varying institutional configurations, but consistently guided by a principle of research freedom, that ensures scientific and governance autonomy.

Currently, NOVA FCSH hosts 16 Research Units, one Research Infrastructure (ROSSIO), and it is a member of one Associate Laboratory (IN2PAST) and one Collaborative Laboratory (Value4Health). Together, they constitute NOVA FCSH research and innovation (R&I) ecosystem, that supports NOVA FCSH in pursuing its mission. As challenging as the articulation of such ecosystem might be, it has been central to the dynamism of research and innovation activities and to further affirm NOVA FCSH as a research university internationally.



ENVISIONING THE FUTURE

Nowadays, NOVA FCSH's ability to fulfil its mission depends on solid practices of engagement and knowledge transfer to society, a conscious promotion of active cooperation and a push for internationalization. These actions, and the diverse and plural fields of knowledge that coexists at our school, provided the context to the vision established in NOVA FCSH Strategic Plan 2025-2030 (SP25-30).

Our strategic plan embraces the diversity and plurality of our research and innovation ecosystem, based on our Research Units' autonomy, while it simultaneously aims at identifying interdisciplinary practices and encounters that sustain a shared and integrated vision of NOVA FCSH as a research university.

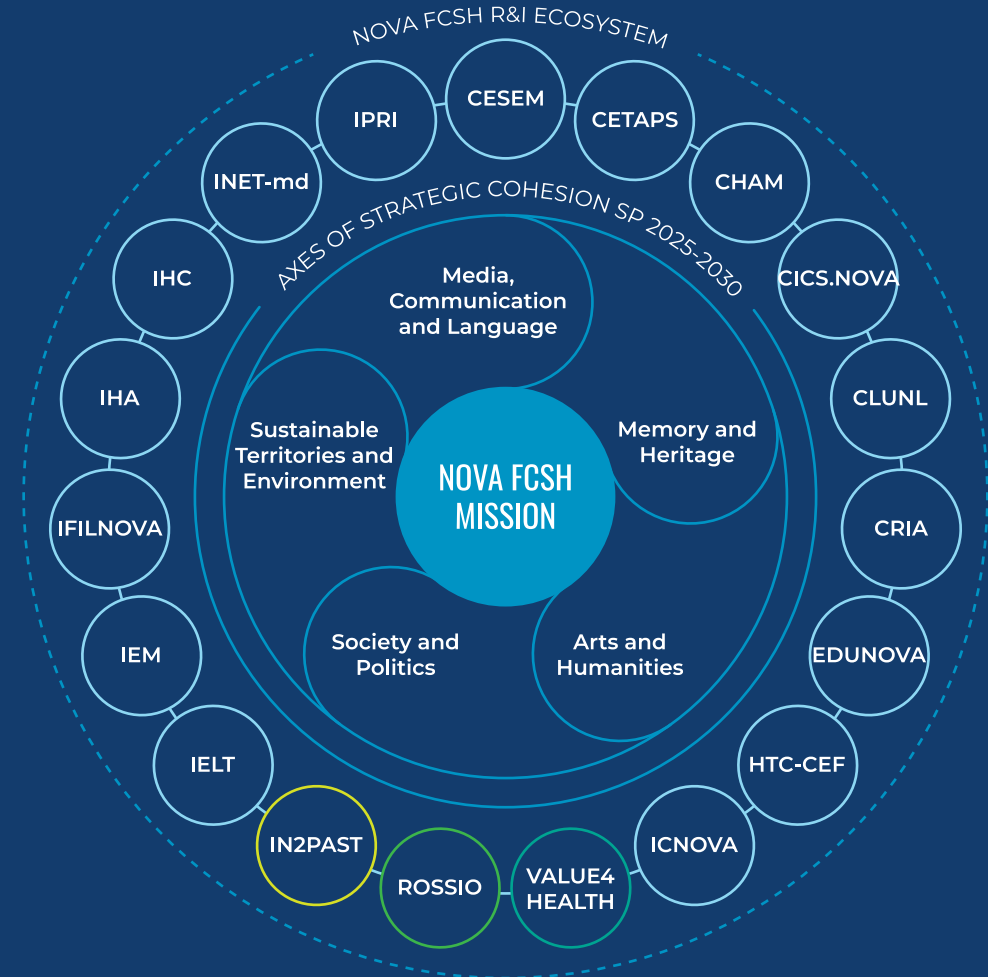
To this end, five axes of strategic cohesion emerged: Society and Politics; Sustainable Territories and Environment; Media, Communication and Language; Memory and Heritage and Arts and Humanities.

These axes provide a transversal frame for established fields and emerging research questions, and address political, ethical, and environmental challenges in today's world. They provide focus and structure to intersectional

cross-fertilization and innovation, while safeguarding scientific freedom for bottom-up approaches, structured around individual or group curiosity and creativity. They ground the curricula reform bridging education and state-of-the-art research and innovation. And, equally important, they establish avenues of institutional and scientific development where NOVA FCSH and its Research Units' priorities reconcile.

For the period 2025-2030, NOVA FCSH identified six strategic pathways to support and embolden its R&I ecosystem, while strengthening its positioning at an international level.

- Support internationalization of research teams and results
- Diversify the funding sources of research and innovation activities
- Affirm NOVA FCSH commitment to Open Science
- Invest in Human Resources for Excellence in R&I
- Strengthen NOVA FCSH partnerships with key stakeholders
- Contribute to the definition of public policies



PUSHING THE BOUNDARIES OF KNOWLEDGE

Groundbreaking research, driven by curiosity and creativity, is at the core of NOVA FCSH efforts to contribute for the advancement of knowledge.

NOVA FCSH has welcomed several individual Marie Curie fellows over the years, that developed their projects in different fields of Social Sciences and Humanities (SSH), ranging from Sustainable Studies to Literary Studies, leaving a crucial international imprint in our R&I ecosystem.

On ERC Grants, our path began with Blackbox (2014-2019), a Starting Grant lead by Carla Fernandes, with an interdisciplinary and cutting-edge model for a web-based collaborative platform, focused on the documentation of compositional processes by contemporary performing artists in dance and theatre. Francisco Freire implemented CAPSAHARA (2017-2021), a Starting Grant, at NOVA FCSH and CRIA, making a decisive contribution to grasp the complex interplay between pre-modern socio-political traditions and contemporary political expression and activism in the northwest African region.

The ongoing work, set in a favourable and supportive environment, will keep NOVA FCSH research at the frontline of knowledge and innovation in the Social Sciences, Arts, and Humanities.



VINCULUM (ERC CONSOLIDATOR, 2019-2025)

Maria de Lurdes Rosa, IHC

VINCULUM proposes a deep historical and archival research into the history of premodern South European societies, taking as its center the entails (*vínculos*). These corporate bodies, with their own social agency, were highly influential in shaping the society. Around 7,000 entails and chantries were founded between the 14th to the 17th centuries across what is now continental Portugal, and in the colonial Atlantic spaces. The project created the largest database of historical data in Portuguese historiography and several books of historical studies, source editions and research tools. This project will add to extensive science communication activities implemented.



4-OCEANS (ERC SYNERGY GRANT, 2021-2027)

Cristina Brito, CHAM

4-Oceans studies the human history of marine life in the 2000-year pre-industrialization in an interdisciplinary and global perspective. It digitally maps historical sources and material evidence about marine extractions, and the social, political, ecological and climatic drivers to the use of key species, and its impacts on ecosystems and societies. Groundbreaking data on use and consumption patterns of ocean resources, on practices, technologies and knowledge production, and cultural interpretation of animals and the sea, has already emerged. Cristina Brito is one of the four PIs in 4-Oceans, and this Synergy is the second ever in Portugal, and the first in Humanities.

FILM AND DEATH (ERC CONSOLIDATOR, 2023-2028)

Susana Viegas, IFILNOVA

The project explores how moving images can help us confront and overcome an existential paradox: while most of us are comfortable discussing death when it is portrayed in moving images, we avoid thinking or talking about our own mortality in everyday life, leading to radical and misconceived positions, including indifference to the topic and fear. It poses a simple question: what if these moving images that depict death and mortality in movies serve as a medium that triggers practical philosophical inquiries into our own finitude? Film and Death is the first ERC grant in Philosophy in Portugal.



STEXEU (ERC STARTING, 2025-2030)

Arturo Zoffman, IHC

STEXEU will develop a multidisciplinary analysis of eight European case-studies on how the continued use of state of exception mechanisms contributed to the weakening of democratic institutions in the early 20th century, by normalizing the states' use of the police and armed forces toward repression. The project will shed new light on the impact that the reliance on states of exception can have to Democracy's resilience in democratic states, a debate that is as timely as ever.

BEYOND THE IVORY TOWER

Innovation and knowledge transfer are crucial to our school mission, with a strong focus on applied research projects that address environmental, social, and cultural challenges. By actively collaborating with external partners, NOVA FCSH fosters the development of impactful solutions that benefit society, including a strong contribution to the definition of public policies.

In addition to these research initiatives, NOVA FCSH hosts a variety of activities aimed at developing dialogue and entrepreneurship, such as Talks featuring specialists from diverse organisations and sectors, and the annual Entrepreneurship Award, aligned with the Sustainable Development Goals, which recognises and supports innovative projects. These efforts are intertwined with the active search for new partnerships, through protocols, with public and private entities, including private foundations, municipalities, associations and private companies. Through these efforts, the school continues to drive progress, connect with stakeholders, and promote sustainable and socially responsible practices across a wide range of fields.

Knowledge dissemination is equally important, and NOVA FCSH counts with the efforts and actions developed by our Research Units and Laboratories, to affirm this compromise. Ranging from specialised journals in open access, some already indexed and others pursuing that goal, to international scientific events, NOVA FCSH R&I ecosystem consistently promotes knowledge dissemination as an integral part of doing research in a complex world. And equally important, these efforts are not circumscribed to academia: regular presence in the media, content creation for podcasts and public events and exhibitions are regular channels to communicate and engage the community. NOVA FCSH also hosts a Master's Degree in Science Communication, directed to professionals from different backgrounds that has contributed decisively to establish a science communication community in Portugal.



PUBLIC SECURITY POLICE: HISTORY AND HERITAGE

The Public Security Police (PSP) has over 150 years of history, with a vast material and immaterial heritage of great significance in Portuguese history. The project is the result of a partnership between the PSP's National Directorate and NOVA FCSH and aims to promote knowledge, preserve, enhance, and disseminate the PSP's legacy, including efforts to organize and create a museum collection of the heritage associated with the history of the police, particularly the assets owned by the PSP.



ESCXEL - NETWORK OF EXCELLENCE SCHOOLS

The ESCXEL project is a collaborative network consisting of researchers in the field of education and educational public policies, local administration actors, and schools. It currently includes 9 municipalities and 32 school clusters. With over a decade of research, the Network seeks to provide mechanisms for reflection, knowledge sharing, and best practices, working collaboratively to develop solutions for pedagogical and organisational problems in schools.



CALOUSTE GULBENKIAN FOUNDATION: ENHANCING ART AND ARCHIVE PRESERVATION

The Calouste Gulbenkian Foundation has been an important partner over the years, collaborating with the school on a variety of impact initiatives and projects. This project focuses on providing specialized services for the preservation, conservation, and digitization of 200 magnetic tapes containing audio recordings from the collections of the Calouste Gulbenkian Foundation's Art Library and Archives.

GUIDING PRINCIPLES AND COMMITMENTS

OPEN SCIENCE

NOVA University Lisbon is fully committed with open science principles and is aligning its institutional policies to make open science central to all its research and innovation activities.

NOVA FCSH has been at the forefront of this institutional change, with initiatives at the school level that raise awareness, provide training and practical guidance to our community. NOVA FCSH Working Group on Open Science is an example of this compromise. It is a bottom-up group that brings together researchers, and non-academic staff to discuss and promote Open Science. Their work has provided crucial guidance to assess Open Access, and their contribution becomes particularly visible in the yearly 'Open Science Month', by occasion of the international Open Access Week.

NOVA FCSH also benefits from NOVA participation in OPUS (Horizon Europe), working in the reform of research assessment through Open Science, and it is a member of OPERAS, a Research Infrastructure supporting open scholarly communication in the SSH in the European Research Area.

COARA PRINCIPLES

NOVA University Lisbon was an early signatory to the agreement on Reforming Research Assessment and is a member of the Coalition for Advancing Research Assessment (COARA). This compromise has led NOVA to revise its legal framework for research assessment, that guides how Researchers' Performance will be evaluated. This normative change presupposes an approach to research that places diversity – of outputs, practices, activities and careers – as well as quality and impact at centre stage. NOVA is also a member of SECURE (Sustainable Careers for Research Empowerment; Horizon Europe), which will certainly intensify our institutional transition.

NOVA FCSH strategic plan foresees specific actions targeting Human Resources for Excellence in R&I to be implemented in 2025-2030, that will be guided by COARA principles.

ETHICS

NOVA FCSH has an Ethics Committee to guarantee that the highest ethical standards are considered and respected at our school. Even though this Committee is not limited to research – if fact, the Committee is a guardian of ethical values for our community – it does provide guidance and validation to research development and project implementation. The Committee considers existing norms at national and international level, as well as ethical practices and fundamental ethical principles for research in SSH.

SUSTAINABLE DEVELOPMENT GOALS

NOVA's Strategic Plan for 2020-2030 is fully aligned with the Sustainable Development Goals. NOVA FCSH echoes this commitment, and develops continuous actions that crosscuts research and innovation actions and the daily decisions we make as an institution compromised with a sustainable future.

GENDER EQUALITY AND INCLUSION

NOVA's Gender Equality Plan is in place since 2021. The plan built on its participation in the SPEAR project (Horizon 2020), and guides all of NOVA Schools in what concerns gender equality promotion. NOVA FCSH is fully committed with gender equality and inclusion, and it has an internal action plan that, in 2021, worked as an anticipation of the change NOVA would instigate later that year. This compromise with equality and inclusion is matched with a dedicated team that works daily to promote a more inclusive and equal community, while nurturing our psychological well-being through the actions of mental health professionals.



A SUPPORTIVE ENVIRONMENT

SUPPORTING RESEARCH AND RESEARCHERS

NOVA FCSH R&I ecosystem can only thrive with a structured support system that is able to tackle the daily challenges of our community while implementing actions that support the emergence of new ideas and projects. In this sense, NOVA FCSH works continuously to level up our support teams to the evolving complexity that characterizes R&I at the national and international level.

The support available to our community ranges from the identification of funding opportunities in competitive international funding programmes to project implementation, covering aspects related with finances, impact, data management, or intellectual property rights.

It is a multilevel system that includes research managers who develop their work in each of our Research Units and Laboratories, as well as transversal and dedicated teams at NOVA FCSH and NOVA University Lisbon. Who work in close collaboration to allow researchers to focus on their ideas and projects.

COLLABORATIVE WORK AND INTERNATIONAL NETWORKS

NOVA University Lisbon is part of international networks that provide new avenues for international collaboration. EUTOPIA opens new paths for collaborative research,

challenge-based learning, enhanced mobility opportunities and enhanced innovation. Specific measures and initiatives are foreseen for research and innovation, such as Connected Research Communities Incubators, or the EUTOPIA Science and Innovation Fellowship Programme.

NOVA is also a member of YERUN (Young European Research Universities Network), committed with a strategic representation of their members' interests and needs, cooperation and opportunities to collaborate in areas of mutual interest and benefit.

LIBRARIES AND ARCHIVES

The School provides its research community with a set of facilities, resources and services that are fundamental to the development of relevant and innovative research in SSH. NOVA FCSH has two libraries, The Mário Sottomayor Cardia Library, aimed at the public, and the Vitorino Magalhães Godinho Library, aimed at researchers. They have a bibliographic collection of around 280,000 books, 73,000 scientific journals and 7,000 units of non-book material. There is a Map Library, with c. 2,500 units of maps and cartographic material. Additionally, the 2 Documentation Centres - Centro de Estudos e Documentação Almada Negreiros - Sarah Affonso (CEDANSA) and Centro de Estudos e Documentação José Mário Branco - Música e Liberdade - guarantee curation, access and study to unique document collection.

RESEARCH INFRASTRUCTURE

Science and technology infrastructures are platforms, resources and associated services used by research institutions or, eventually, by other entities, with the aim of making resources and services available to the scientific community, namely large-scale equipment, sets of scientific instruments, collections and other knowledge-based resources, scientific archives and data, computer and programming systems and communication networks, aimed at the creation and dissemination of scientific knowledge.



Open and intuitive access to unique and diverse digital content in the areas of Social Sciences, Arts and Humanities.

The ROSSIO Infrastructure is a pioneering and innovative initiative in Portugal, aggregating data from various cultural, scientific and educational institutions. It provides a free online platform where anyone can access unique resources, representative of the richness and diversity of Portuguese-speaking history, society and cultural heritage.

ROSSIO Services and Resources:

- More than 7 million digital resources
- Virtual Research Environment. Work platform designed for researchers that allows collaboration in a reserved and secure area.
- Digital collections. Thematic collections structured from ROSSIO's digital resources and aimed at the general public, teachers and students.
- Digital exhibitions. Thematic narratives structured from ROSSIO's digital resources, revealing the diversity of documentary typologies and their richness.
- MOOCs. Open and free online courses available on the NAU platform, which contribute to the development of skills of the entire community.
- Training events. Workshops and training sessions to support digital transformation in the cultural heritage sector.



ROSSIO is one of the 56 Infrastructures included in the National Roadmap for Research Infrastructures of Strategic Interest, created by the Portuguese Foundation for Science and Technology.



ROSSIO is the Portuguese node for DARIAH ERIC – Digital Research Infrastructure for the Arts and Humanities. A research infrastructure integrated in the ESFRI roadmap that enhances and supports digitally enabled research and teaching across the arts and humanities.



ROSSIO consortium is coordinated by the School of Social Sciences and Humanities and integrates several educational and cultural institutions:

- Calouste Gulbenkian Foundation
- Cinemateca Portuguesa (Portuguese Film Library) - Museum of Cinema
- D. Maria II National Theater
- General Administration for Books, Archives and Libraries
- Cultural Heritage. Public Institute
- Lisbon City Council - Lisbon Municipal Archive
- University of Coimbra
- Diplomatic Archives of the Ministry of Foreign Affairs
- Faculty of Arts and Humanities of University of Porto
- National Library of Portugal
- National Sound Archive
- Regional Directorate of the Archive and Library of Madeira
- Portuguese Navy Central Library
- Portuguese Army - Library and Military Historical Archives



A photograph of a female scientist with long blonde hair, wearing a white lab coat and a white surgical mask. She is shown in profile, looking down at a piece of laboratory equipment on a wooden table. She is wearing blue nitrile gloves. The background is a blurred laboratory setting with various pieces of equipment.

RESEARCH UNITS

Research Units are the basis of the portuguese national scientific and technological system. They are dedicated to research development, training and to the dissemination of science and technology. Research Units have human resources and equipment allocated to their activity, but they are not necessarily a stand-alone organisation. In fact, they can be hosted by more than one entity, as a result of a larger consortium, but their scientific autonomy remains central.

CESEM is a research unit that focuses on Music Studies, both disciplinary and interdisciplinary, exploring connections with social and cultural fields. Initially centred on the Sociology and Aesthetics of Music, CESEM now covers areas such as Historical Musicology, Cultural Heritage, Critical Theory, Music Psychology, Pedagogy, Creation, and Media. International recognition has been achieved in all these areas.

With more than 300 members, CESEM operates mainly at NOVA FCSH, but also has branches at the University of Évora and at the Polytechnic Institutes of Lisbon and Porto. It is organised into five research groups (Early Music Studies; Music in the Modern Era; Contemporary Music; Critical Theory and Communication, and Education and Human Development) and eight thematic lines, covering areas such as Luso-Brazilian Studies, Music Iconography, Opera, Music and Literature, Music and Performance, Gender and Sexualities. CESEM's library is the largest musicological resource in the country, and the centre also offers extensive digital resources and laboratory facilities.

As a founding member of IN2PAST since 2021, CESEM fosters an inclusive and supportive environment for researchers, with a strong emphasis on mentoring, gender equality and inclusivity.

2018-2023

137
BOOKS

398
BOOK CHAPTERS

335
ARTICLES

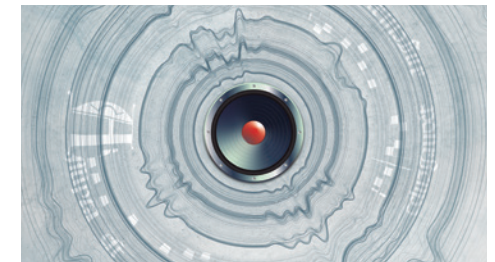
150
SCOPUS & WoS ARTICLES

CESEM.FCSH.UNL.PT



**THEMATIC HISTORY OF MUSIC
IN PORTUGAL AND BRAZIL**
A COMPREHENSIVE MUSICOLOGICAL NARRATIVE AND A
THEMATICALLY STRUCTURED HISTORY OF MUSIC

This project addresses the lack of in-depth research on music in these two countries and the southern Atlantic. It focuses on cultural exchanges, spatial dynamics and postcolonial perspectives, going beyond linear narratives. 12 coordinators from Portugal and Brazil assist Manuel Pedro Ferreira in overseeing each of the 6 interrelated volumes. The team includes doctoral and post-doctoral researchers, supported by a management team and students who contribute to the platform.



DIGITAL MUSICOLOGY

CESEM is leading the effort to create digital tools for broad access to music, following the FAIR principles, including digitisation, databases, music editions, automatic analysis and other digital resources. We offer 10 open-access databases, including the Portuguese Early Music Database, MARCMUS (watermarks), and the José Mario Branco Archive. Projects have produced open-access editions, developed Optical Music Recognition technology for the analysis of early notation, and explored historical soundscapes made available online.



**DEVELOPING THE CREATIVE
AND PERFORMATIVE COMPONENT**

Between 2018-2023, CESEM members produced nearly 500 artistic works, including premieres of vocal, instrumental, electronic and experimental compositions, among which works by C. Caires, L. Soldado and L. Tinoco. More than 2000 concerts were given by CESEM members, focusing on the Portuguese and Brazilian musical heritage, with significant contributions to contemporary music. Several multimedia recordings have been produced and distributed through CDs and YouTube, linking academic and artistic research with the public.

The Centre for English, Translation and Anglo-Portuguese Studies (CETAPS) brings together 180 researchers from 11 Portuguese Higher Education institutions, promoting research and activities with high national and international reach.

CETAPS runs 11 databases and publishes 4 electronic journals.

CETAPS is organised into 6 Research Areas and its dominant disciplinary domain is in the field of English Studies, as understood and practiced internationally, but this focus on the Anglophone world is sharpened and inflected by an operative awareness of a Portuguese cultural standpoint. This creates the conditions for a research rationale which is interlingual and intercultural, a relational characteristic that endows the Centre with its uniqueness, both nationally and internationally. Through the lens of 'mobility', CETAPS has favoured the study of interactions with outsiders in Anglophone creations since the Early Modern period.

In the near future, CETAPS will commit to a strategic project focused on Sustainable Cultures, claiming that cultures owe both their self-perception and external recognition not to intrinsic traits, but rather to cultural, linguistic, medial, and epistemic relations.

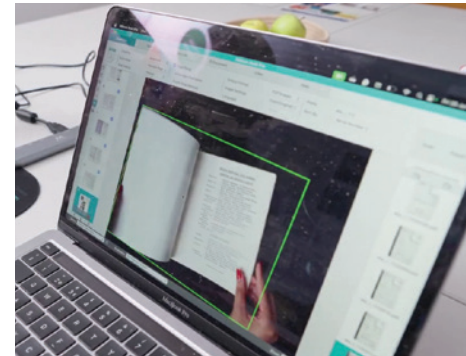
78
BOOKS

162
BOOK CHAPTERS

241
ARTICLES

206
SCOPUS ARTICLES

CETAPS.COM



SCOPUS JOURNALS

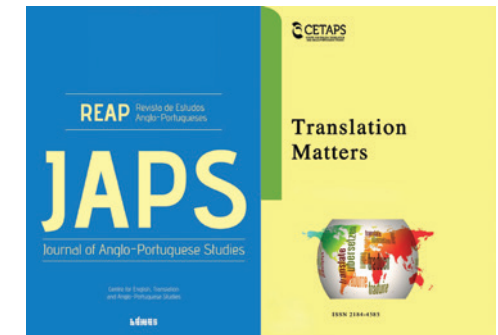
CETAPS compromise with knowledge dissemination is well expressed in its high-quality journals. The Journal of Anglo-Portuguese Studies (JAPS; 1990-) operates to a high editorial standard, maintaining a strict regularity in publication. It is organised around a tripartite structure of Projects, Essays/ Studies and Reviews.

Translation Matters (2019-) provides a broad platform for articles on all aspects of translation. It began as a training journal for early-stage researchers but rapidly attracted more senior international scholars, enabling it to get Scopus indexation in 2023 and a Q1 rating.



DIGITAL HUMANITIES

CETAPS Digital Lab (DL) hosts unique projects and provides initial and advanced training and support that allow researchers to experiment with critical Digital Humanities (DH) approaches. It has been equipped with state-of-the-art instruments and software that make it self-sufficient. Built on the values of openness, diversity, collaboration, experimentation and sustainability, the DL is committed to FAIR principles, minimal computing, open science and participatory science approaches.



STRATEGIC PARTNERSHIPS WITH EU FUNDING

CETAPS has a strong international strategy, promoting cooperation and partnerships with many international institutions and partners. We participate in and co-organise joint Masters and Doctoral programmes; we have joined intensive programmes and promoted Erasmus internships; we participate in board membership in societies and journals; we have been hosting / co-organizing many international conferences; and we have published in journals and collections with global circulation.

CHAM is an inter-university research unit (NOVA FCSH and the University of the Azores) and a leading centre in the Humanities in Portugal. Internationally renowned for its interdisciplinary and multi-scale approaches, CHAM's ground-breaking research places cross-cultural and cross-geographic perspectives at the forefront.

Its members carry out their work within 8 research groups — Archaeology and Landscape; Art, History, and Heritage; Early Modern and Contemporary Thought; Environment, Interactions and Globalisation; Information, Reading and Writing Forms; Representations, Discourses, Materialities and Uses of the Past; Social, Economic and Political Dynamics; and Transcultural, Literary and Postcolonial Studies — and 3 thematic lines — Theory and Methodology, Heritage and Current Challenges, and Digital Paradigm.

In the forthcoming years, CHAM will explore representations of the Human and Humanity by examining the circulation of ideas and their expressions, as well as discussing the correlation between Western concepts of humanity and the evolving paradigms of modernity. Moreover, CHAM aims to foster internationalisation, bolster its involvement in advanced training, strengthen its ties with local and global communities, and make scientific knowledge open and accessible to different audiences.

309
BOOKS

1250
BOOK CHAPTERS

973
ARTICLES

497
SCOPUS & WoS ARTICLES

CHAM.FCSH.UNL.PT



RIC - REVISTAS DE IDEIAS E CULTURA

RIC aims to collect, curate, digitally publish, and study Portuguese and Brazilian 20th-century magazines. This open-access platform connects both the traditional and digital realms of cultural history, providing digitised magazines and analytic databases that facilitate a qualitative and quantitative exploration of a wide range of sources. The consortium for RIC's portal gathers around 20 institutions, including the National Library of Portugal and the Mário Soares Foundation.



EDGES - ENTANGLING INDIGENOUS KNOWLEDGE IN UNIVERSITIES

EDGES is a HORIZON-MSCA Staff Exchanges network that brings together Indigenous and academic knowledges, promoting Indigenous perspectives in research, education, and public and environmental policies. It comprises more than 150 researchers from 18 European and American universities and one SME, with the aim of fostering a pluralist and multi-scale approach to knowledge production, research, and dissemination through workshops, open-access publications, policy recommendations, and social media.



PORTUGAL-PHILIPPINES: CONNECTED HISTORIES

The Portugal-Philippines project is a partnership between CHAM, the Ateneo de Manila University, the Embassy of the Philippines in Lisbon, and other Filipino institutions. It has brought scholars from both countries together, generating a scientific and academic hub that encourages research cooperation on the entangled history and common heritage of Portugal and Southeast Asia. The project has paved the way to new research projects, books, exhibitions, scientific meetings, and outreach activities.

CICS.NOVA is a R&D unit dedicated to critical thinking and research in social sciences, strongly committed to advanced training and career development, as well as to multi-level dissemination of knowledge and its integration into local communities. Its most distinctive features lie in a productive and balanced interplay of disciplinary diversity with thematic integration, and of strategic cohesiveness with regional deployment and scientific cooperation at local, national and international scales.

CICS.NOVA integrates more than 100 researchers across five sites: the headquarters in Lisbon and regional hubs in Minho, Leiria, Évora and the Azores. It articulates its two-core research areas (i.e., sociology and geography) with other social sciences, humanities, life sciences and engineering, under six research groups (RG): Social inequalities and public action; Citizenship, work and technology; Cities, environment and regional development; Modelling and planning systems; Health, population and well-being; Education, knowledge and culture.

Moreover, four Observatories draw on socially impactful research: Experimental Centre on Soil Erosion; Azores Youth Observatory; Technology Assessment Observatory; and National Observatory on Violence and Gender. Lastly, a Laboratory of Ideas creates spaces of scientific debate and cooperation among researchers from different hubs.

115
BOOKS

339
BOOK CHAPTERS

437
ARTICLES

523
SCOPUS & WoS ARTICLES

CICS.NOVA.FCSH.UNL.PT



LXNIGHTS

LXNIGHTS is an international and multidisciplinary research network hosted at CICS.NOVA and coordinated by Jordi Nofre. It analyses the spatial, social, cultural, economic, and governance-related impacts of the expansion of nighttime leisure economy in central urban areas. The group organises the International Conference on Night Studies, associated with the International Night Studies Network, that brings together researchers from Europe and America.



SMOOTH

SMOOTH develops pioneering interdisciplinary and intercultural action-research aimed at introducing the emergent paradigm of the 'commons' as an alternative value and action system in education for children and young people. The research critically draws out the implications of the commons in refiguring education for social change.



CEESVF

The Experimental Centre for Soil Erosion is renowned worldwide for its expertise in crucial sustainability topics such as soil erosion and desertification. Through the implementation of experimental models to evaluate the importance of agricultural practices and the role of different cultures in soil and water conservation, it significantly contributes to the strategic axes on sustainability of both NOVA and FCSH, aligning with UN SDGs 13 and 15. Maria José Roxo leads the centre.

CLUNL aims to deepen the understanding of language as a complex and dynamic object within various theoretical and methodological frameworks, while fostering a free and dynamic environment for researchers, supporting scientific employment, and promoting excellence and internationalisation.

Since 2018, CLUNL secured funding for projects and initiatives in highly competitive national and international calls (FCT, HORIZON, Erasmus+), organised national and international conferences (GRATO, ARLE, HUGOD), and promoted training and opportunities for young researchers (Lisbon Summer School in Linguistics, INCENTIVE Program, Forum for Linguistic Sharing). This has led to a vibrant academic environment and productive exchange of knowledge synergies across several areas of Linguistics.

In the forthcoming years, CLUNL aims to expand its investigation in terminology, lexicology, lexicography, language acquisition and processing, and text and grammar analysis, and to explore new research avenues related to computational linguistics, digital preservation, heritage, and Digital Humanities. These efforts are intended to contribute to the advancement of knowledge in linguistics and address societal challenges such as educational inequality, language impairment, and the promotion of multilingualism.

44
BOOKS

174
BOOK CHAPTERS

188
ARTICLES

53
SCOPUS ARTICLES

CLUNL.FCSH.UNL.PT



IREAD4SKILLS

Raquel Amaro leads the international consortium implementing iRead4Skills (Horizon Europe). Combining an interdisciplinarity team covering different fields of expertise such as Linguistics, Education Studies, Computer Sciences, Socioeconomics, and partners from academia, industry and public administration, this project aims to promote the development of reading skills through an innovative system that assesses text complexity and recommends suitable reading materials to adults with low literacy skills, which can also be used by trainers in the creation or adaptation of texts.



Pipale: Stéphanie Vaz

HEREDITARY

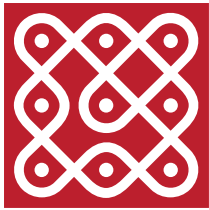
HEREDITARY (Horizon Europe) aims to significantly transform the way we approach disease detection, prepare treatment response, and explore medical knowledge by building a robust, interoperable, trustworthy and secure framework that integrates multimodal health data, while ensuring compliance with cross-national privacy-preserving policies, ensuring that patients and the public have a primary role in guiding scientific and medical research while maintaining full control of their data. Rute Costa leads the NOVA team in this consortium, coordinated by the University of Padova.



iRead4Skills: Nuno Mamede

PIPALE

Led by Joana Batalha e Maria Lobo, PIPALE is a local project funded by municipalities and it aims to prevent education underachievement. It does so by promoting language awareness strategies and early intervention, through the improvement of the learning achievements in Portuguese L1 in linguistic awareness, early literacy, and reading and writing skills. A corpus of early written narratives is being developed, with more than 1200 written narratives from 2nd and 3rd graders that integrate the assessment instrument PIPALE digitised and transcribed with CLAN.



CRIIA

CRIIA is the main Portuguese Research Centre in Anthropology. It is an interuniversity R&D unit, with 4 university branches - ISCTE, NOVA FCSH, UC and UMinho, and shared management, fundraising, research dissemination, teaching and knowledge transfer capabilities.

Four Research Groups provide the broad organisational framework of research at CRIIA: Circulation and Place-Making; Environment, Sustainability and Ethnography; Livelihoods, Politics and Inequalities; and Practices and Politics of Culture. Bottom-up Thematic Lines are built upon particular topics. Research, training and hosting benefit from the strong laboratorial dimensions (four laboratories), opening new lines of research and stimulating engagement with public institutions. CRIIA makes a solid contribution to contemporary cultural knowledge and social dynamics.

In the forthcoming years, CRIIA will consolidate its research agenda with a focus on core areas such as heritage, environment, mobilities and inequalities. This period will witness an expansion of CRIIA international presence, a proactive response to urgent contemporary social issues, a reaffirmation of our commitment to a public orientated Anthropology developing knowledge production practices. CRIIA's mission is thus to contribute to a more inclusive and democratic society.

116
BOOKS

367
BOOK CHAPTERS

535
ARTICLES

328
SCOPUS ARTICLES

CRIIA.ORG.PT



ECOS

With an international consortium led by Sonia Ferreira and funded by Europe for Citizens, ECOS contributed to the understanding of how bibliographical testimonies and narratives of exile participated on the construction of a European memory. #ECOS emphasized the importance of exile narratives for the construction of a European memory by (1) collecting and processing information on life in exile and (2) promoting a public debate on how exile narratives affect the construction of transnational memories.



CAPSAHARA

The ERC Starting Grant led by Francisco Freire had the analysis of the types of interplay established between pre-modern socio-political traditions and contemporary political expression and activism as the main goal. The project was crucial in promoting expertise related to the northwest African region, thereby positioning CRIIA as a national and international reference in this specialized field. CAPSAHARA also resulted in new international partnerships, notably with the Universities of Florida, Bayreuth and Nouakchott.



'A RAMADAN IN LISBON'

The documentary film 'A Ramadan in Lisbon' displays the celebrations related to the month of Ramadan (the ninth month of the Islamic calendar, marked by the practice of fasting from sunrise to sunset) by Muslim populations living in Portugal and more specifically in the Lisbon Metropolitan Area. The film portrays multiple experiences and give an account of the diversity of practices, perspectives, actors, ingredients, and rituals that can be observed during this festivity. The project was supported by Lisbon Municipality and the Cinema and Audiovisual Institute.

EDUNOVA.ISPA is a new Research Unit built on a collaborative consortium between ISPA - Instituto Universitário, and NOVA University, specifically NOVA FCT (NOVA School of Science and Technology), and NOVA FCSH (NOVA School of Social Sciences and Humanities). It is dedicated to “Building Bridges in Education Research: From Learners to Systems, from Diversity to Inclusion,” with a focus on two key scientific domains: Processes and Practices in Education (SD1) and Ideas, Policies, and Social Change in Education (SD2). Each domain comprises two thematic areas: Learning Contexts, Processes, and Literacies (TA1), and Teachers’ Educational Knowledge and Professional Cultures (TA2) within SD1, and Education Systems and School Organisation (TA3), and Diversity and Inclusion: Curriculum, Pedagogical Practices, and Assessment (TA4) within SD2.

Five key goals are assumed:

1. To promote research in education across different dimensions of educational processes and contexts;
2. To enhance and project scientific research in the field of education;
3. To transfer advanced knowledge to younger generations of researchers through close collaboration with the postgraduate training of the involved institutions;
4. To disseminate scientific knowledge and methodological tools in the field of education;
5. To intensify international partnerships.

Even though EDUNOVA is a recent research unit, its members have been actively involved in several research projects and initiatives that are aligned with its mission and goals.

EDUNOVA-ISPA.ORG



RESEARCH IN LITERACY

Research in literacy (written language) has provided valuable insights into the importance of early literacy practices in preschool, which help clarify the foundations of the literacy learning process and improve teaching methods used by preschool educators. Among these practices, the use of invented spelling has proven to be a powerful strategy for optimizing children’s literacy acquisition, supporting their success in the early years of schooling.



MATHMOT

The MATHMot project, funded by the Research Council of Norway and involving six European countries, aims to study the development of motivation for learning mathematics during the transition from elementary to middle school, and to identify relevant classroom practices that foster positive motivation for learning math. The project’s results contribute to the expertise and capacity building of teachers and schools, as well as to pre-service teacher programs.



DIGITAL EDUCATION

Research in digital education contributed to the development of an expert interview study at the start of the pandemic, addressing the emergence of remote teaching practices. This research was presented in a collaborative publication that had a significant impact on educational systems worldwide. Due to its timely release and high quality, the publication quickly gained widespread attention among educational researchers and was included in Springer Nature’s “Best 2020 Reads” collection.



história territórios comunidades

Founded in 2020, History, Territories and Communities (HTC) is a Centre for Functional Ecology (CFE) pole at the NOVA FCSH. The CFE encompasses researchers from fields of ecology, environmental and territorial sciences, social sciences and humanities, aiming to address contemporary societal challenges tied to the global commitment to sustainability, which resonates with HTC's multidisciplinary mission and goals.

With its focus on the human past, the HTC has three research purposes for the forthcoming years: to understand and preserve historical and biocultural heritage - researching historical trajectories and identities to comprehend cultural, institutional, biocultural heritage and community building; to study processes of transition - analysing historical processes and environmental changes, as well as the recent transition movements that are questioning the current model of development; to inform policy and practice - providing historical knowledge to preserve cultural heritage and biodiversity, recognising the importance of memory, fostering collaborations between science fields, policymaking practitioners, and promoting a responsible citizenship.

The HTC has over 100 member, including its integrated PhD holders, PhD and Master students.

31
BOOKS

77
BOOK CHAPTERS

97
ARTICLES

29
SCOPUS ARTICLES

HTC.FCSH.UNL.PT



SHIFT - SOCIAL SCIENCES AND HUMANITIES FOR TRANSFORMATION AND CLIMATE RESILIENCE

SHIFT is a COST-Action that aims to build a knowledge base for Social Sciences and Humanities involvement in transdisciplinary critical practice in climate action and related societal practices, encompassing research, policy, business, community and individual practices. Beyond the collaboration it sustains, SHIFT is compromised with future-oriented and tangible solutions, based on collaborative working tools and creative processes.



BIOSPHERE RESERVES

This EEA project analyses the history of the Portuguese BRs. It characterised their heritage, conducting more than 200 interviews, and it designed a sophisticated digital infrastructure while it developed a civic, environmental and heritage culture, which supports a sustainable political economy at the local level. The project was implemented by an international consortium that actively engaged with local communities.



MEMORY FOR ALL

This is a research and knowledge-sharing program, fostering convergence between different heritage types and dialogue among various disciplines and scientific areas. Following Open Science principles, the project is developed in close collaboration with archives, libraries, public administration institutions, municipalities, private entities, schools, and local associations, building up the larger and all-encompassing Digital History Database as well as the larger Oral History database in Portugal.

ICNOVA is a research center focused on addressing contemporary challenges in media, communication, and arts, to influence societal practices. Through participatory research methods and national and international collaborations, ICNOVA advances scientific knowledge capable of informing debates and public policies, and empowering marginalized groups. In the forthcoming years, its research agenda focuses on two main axes:

- Social and Ecological Responsibilities, examining media dynamics, power relations, environmental challenges, and social inequalities;

- Sociocultural, Artistic, and Performance Dimensions of Media, exploring digital media's history, emerging technologies, and their cultural and artistic implications.

ICNOVA's five research groups contribute to understanding media and communication's role in societal well-being, emphasizing co-creation, innovative methodologies, and interdisciplinary approaches. Between 2018-2023, ICNOVA led international projects, such as Fact-Checking, and other Erasmus+ initiatives, as well as national projects, such as RED for Digital Educational resources, in partnership with the Portuguese Ministry of Education. ICNOVA members are also part of international networks such as COST Actions or EU Kids Online and they often act as consultants in national and international fora in the definition of public policies (e.g., Council of Europe).

122
BOOKS

467
BOOK CHAPTERS

431
ARTICLES

259
SCOPUS ARTICLES

ICNOVA.FCSH.UNL.PT



ySKILLS Education Toolkit - Portugal. KU Leuven: ySKILLS

T-FACTOR

This large scale H2020 project aimed to boost novel approaches on urban regeneration and involved different stakeholders, from the academia, grassroots communities, business and governmental bodies. It involved 28 full partners in 15 countries. In Portugal (Trafaria), art-driven initiatives closely engaged with the local population. The creation of a 'bottom-up museum' facilitated an action-research programme with citizens, and main activities included WalkScapes, Slam Poetry workshops, podcasts and a final 2-day roadshow.



The visual colonial archive under study by the Photo Impulse project (2018-2022)

YSKILLS

ySkills (H2020) aimed to enhance and maximise the long-term positive impact of the digital environment on youth. With 14 partners from 13 countries, ySKILLS developed an innovative indicator articulating digital skills and knowledge, and guided a longitudinal survey in six countries. Responsible for Communication, Dissemination and Exploitation, NOVA team developed an educational toolkit, later translated into several languages. The results of the Portuguese survey were discussed with participants, including adolescents, teachers and policy makers.



Workshop on Emotional Borders with Trafaria residents. ©Helena Elias, Photo Impulse and T-Factor, 2022

PHOTO IMPULSE

This FCT funded project on Portuguese colonial photography with Afro-descendant communities aimed to study a collection of photographs and films from the late 1890s to 1975. The project promoted participatory activities with Afro-descendant communities, engaging with the co-creation of knowledge. Among the various artistic outputs, the final exhibition in a public Museum (2022-24) was produced with participatory curation and a decolonial approach. The Portuguese museology community embraced the project as an example of the recent trends in decolonising museums.

The Institute for the Study of Literature and Tradition (IELT) is an R&D unit (RU) dedicated to the study of the literary phenomenon in its multifaceted relationship with tradition, understood as a living collection that participates in the construction and creation of value in the scientific, cultural, artistic and social spheres.

Its main objectives are: a) the study of literature with memoristic record and oral transmission (dynamics, contexts, symbolic and specific processes of textual production, fixation, reception and reproduction), as well as its persistence in the formation, consolidation and dissemination of identity, cultural, literary and artistic matrices; b) the analysis of the relationship between literary modernity, memory and tradition and the status of modernity as tradition; c) the study of the literary phenomenon in its relationship with other arts, disciplines and discursive modalities; d) the conceptualization of the archive as a space where memory and reinvention meet, reinforcing the link between literature and tradition.

The RU has embodied policies to strengthen the interrelationship between research, teaching and knowledge transfer, exploiting the originality of the intersection of its main fields of action (literature and tradition).

111
BOOKS

179
BOOK CHAPTERS

173
ARTICLES

106
SCOPUS & WoS ARTICLES

IELT.FCSH.UNL.PT



PORTUGUESE WOMEN WRITERS DURING THE MILITARY DICTATORSHIP AND THE ESTADO NOVO IN PORTUGAL, AFRICA, ASIA AND COUNTRIES OF EMIGRATION

This project has been contributing to integrate writing by women into Portuguese heritage and to bring together senior researchers and master's students. It is coordinated by IELT and developed in partnership with CICS.NOVA/Faces of Eva and CRILUS - University of Paris Nanterre. The open access database has around 700 authors listed.



GHOST

Spectrality in Literature and the Arts (Portugal and Brazil). This exploratory project was awarded funding from FCT and brings together 11 researchers from different research units. GHOST sets out to explore the dual nature of the ghost as a figure and concept in Luso-Brazilian literature and art. The project has 2 lines of action: 1) Spectralities of writing; 2) Haunted media. GHOST enhances the presence of Interart Studies and Comparative Literature at IELT.



RELIT-ROM

Literary revisions: the creative application of old ballads (15th-18th centuries). This project has funding from the Calouste Gulbenkian Foundation and FCT and is dedicated to the inventory and critical study of the presence of traditional ballads in literary works by Portuguese authors from before the 19th century. RELIT-Rom prepared the first digital catalogue of these mentions, after the century old "Romances Velhos em Portugal" (C. M. Vasconcelos, 1907-1909).



The Institute for Medieval Studies (IEM) aims to promote high quality research in the medieval field by networking with other researchers in Portugal and elsewhere to foster international collaboration that sustains the emergence of new, multidisciplinary and comparative approaches to the Middle Ages. IEM has c. 200 researchers, with background and training in Archaeology, Art History, History, Literature and Musicology. They jointly work on two main transversal research axes - People and Knowledge in Motion: Portugal in Trans-European Medieval Networks; and Medieval Heritage and Material Culture - and integrated in two research groups - Images, Texts and Representations and Territories and Powers: a «Glocal» Perspective. In the forthcoming years, IEM will be guided by the motto “The Middle Ages in Action”, basing its strategy on four main objectives:

I. Consolidate IEM as centre of excellence and reference internationally.

II. Promote innovative, multi- and transdisciplinary, integrated and inclusive research.

III. Share knowledge, guaranteeing the universal availability of data, methods, and research results, as well as interconnectivity in Academic and Societal spheres.

IV. Support researchers at all activity stages, ensuring quality, advanced training and access to necessary resources, and focusing on stabilising research careers.

104
BOOKS

426
BOOK CHAPTERS

328
ARTICLES

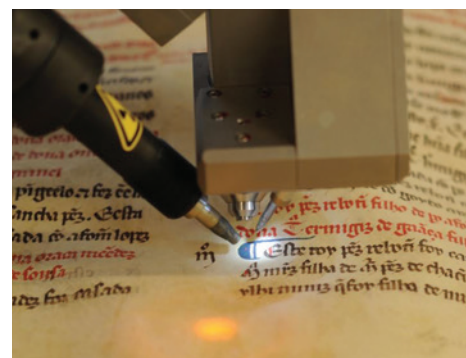
157
SCOPUS & WoS ARTICLES

IEM.FCSH.UNL.PT



AMBITIOUS TRAINING PROGRAMMES

IEM implemented a diverse and ambitious training programme in recent years. This programme is at the core of IEM’s partnerships with Heritage Sites, Archives, Libraries, Museums, Municipalities and Training Centres. Our yearly Autumn School for MA and PhD students at Castelo de Vide, organized in articulation with the International Conference on the Middle Ages, is a solid example on how IEM reconciles scientific excellence, internationalization, and a partnership with municipalities, through its training programme.



MULTI/TRANS/INTERDISCIPLINARY RESEARCH

IEM’s capacity for developing truly interdisciplinary projects is a distinctive feature of our RU. By combining Art History, History, Archaeology, Geography, Chemistry, Geology, Bioanthropology, Anthropology, Carpology, Zooarchaeology, Paleogenetics and Ethnography, the research developed at IEM fuels the construction of detailed portraits of the past, thus substantially deepening our understanding of ways of life among diverse medieval communities. One such projects as *Books, rituals and spaces in a Cistercian nunnery. Living, praying and reading in Lorvão Abbey, 13th–16th centuries*.



MEDIEVAL, A KNOWLEDGE TRANSFER HUB

IEM focused on Historical Cultural Heritage in recent years, reframing its partnerships with heritage sites, civil entities, and cultural institutions. Although such collaborations have consistently resulted in products and services that materialise knowledge transfer, IEM approached this endeavour with renewed ambition and created an internal structure for knowledge transfer and innovation activities. Medieval’s mission is to generate economic and social value from the knowledge created at IEM. In 2023, this project was recognized with the NOVA Sciencepreneur Award.

IFILNOVA's main purpose is to develop research programs focused on values as a philosophical question, particularly by investigating the nature of value, the role of values in human action, as well as their normativity as constituted through cultural life forms, public argumentation and reasoning in the ethical, political and aesthetic realms. IFILNOVA has achieved very significant international recognition in such fields as argumentation theory, epistemology, history of philosophy, and philosophy of education. At a national level, it has always been rated as Excellent by the FCT since 1993.

IFILNOVA's main task for the years to come is to continue developing research projects funded by external organisations; to continue publishing results in the best scientific journals and in the best national and international publishers, as well as achieving internationally recognised excellence in all areas of its research; to provide advanced training through the award and scientific supervision of doctoral scholarships within the framework of 3 doctoral programmes in Philosophy, Communication Sciences, and Artistic Studies; to implement an ambitious hiring plan under the FCT-Tenure programme that will consolidate IFILNOVA's position as one of the leading European research centres in philosophy.

88
BOOKS

372
BOOK CHAPTERS

487
ARTICLES

357
SCOPUS ARTICLES

IFILNOVA.PT



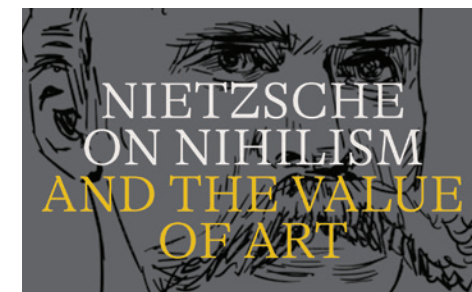
NIETZSCHE ON NIHILISM AND THE VALUE OF ART

The project 'Nietzsche on Nihilism and the Value of Art' led by João Constâncio focused on Nietzsche's conception of nihilism and the relevance of his views on the value of art and its relationship with life to grasp the current multifaceted crisis of values. The project embodied the dynamism of Lisbon Nietzsche Group, recognized by the relevance of its scientific production (with internationally published books and over 50 indexed articles published in Nietzschean studies journals). Since 2023, the group co-organises the King's and Nova Nietzsche Seminar at King's College, London.



INTEGRATION OF REFUGEES (EUASPO)

The EPLab hosted the project 'Integration of refugees in Portugal: assessing moral duties and integration policies in the context of European values and policies' led by Gabriele De Angelis. It contributed to the national and European debate on the integration of refugees and its numerous and diverse events contributed to the creation of the NOVA Asylum Policy Lab, a national reference in the field, providing insights into legislation and implementation of asylum policies, in cooperation with scholars from various national research institutions.



ARGUMENTATION AND PUBLIC POLICY ANALYSIS

The ArgLab hosted the COST Action 'European Network for Argumentation and Public Policy Analysis', a large pan-European project. It involved several IFILNOVA researchers, including Marcin Lewinski as the PI (Main Proposer / Action Chair) and Dima Mohammed (Management Committee). The project, across its three Working Groups, employed philosophical concepts and methods to better understand, evaluate, and design the way European citizens engage in public decision-making on such matters of common concern as climate change or a global pandemic.

The Art History Institute (IHA) takes art history as a field of knowledge of particular importance to the Humanities, encompassing the study of visual and material culture rather than solely focusing on exceptional objects.

IHA addresses Portuguese art history from a supranational perspective that entwines it with broader art historical questions and interrogates Portuguese historical relations with global geographies. It promotes high-standard basic and applied research developed closely with undergraduate and graduate teaching programs, supports scientific employment, and offers advanced research-training opportunities for students. It fosters a continuous dialogue with other research fields to assert the significance of art history in contemporary culture through the development of strategic national and international institutional partnerships, by amplifying the dissemination of knowledge and fostering an open-access culture for all.

IHA is an active member of RIHA (The International Association of Research Institutes in the History of Art) since 2012 and a founding member of IN2PAST (Associate Laboratory for Research and Innovation in Heritage, Arts, Sustainability and Territory) since 2020.

114
BOOKS

318
BOOK CHAPTERS

258
ARTICLES

207
SCOPUS ARTICLES

INSTITUTODEHISTORIADAARTE.COM



Exhibition Visual Arts, nov. 1957. Photo by Mário de Oliveira, from Biblioteca de Arte Gulbenkian, Lisboa / CFT032.1/275

RAISEXPO

The digital catalogue of the RAISEXPO project - History of the Calouste Gulbenkian Foundation's Art Exhibitions was a pioneering R&D project in Portugal, developed over 8 years, whose main goals were to study, digitise, inventory and disseminate the FCG exhibition memory in the artistic field, highlighting the entire programme developed between 1957 and 2024. The research was centred on the vast documentary and bibliographic collection of their Archive and Library, which includes written, photographic and film records of the exhibitions held from 1957 onwards.



PROBLEMS OF PRIMITIVISM

Problems of Primitivism - from Portugal is an exhibition held at the José de Guimarães International Arts Centre (CIAJG) as a result of a partnership with the IHA. Investigative and experimental, this exhibition partly derives from the PIM project - Iberian Modernisms and the Primitivist Imaginary and proposes a bold vision that interrogates 'primitivism' and its contradictions, addressing the contexts of dictatorship, colonisation, anti-colonialism and post-colonialism, problematising this concept right up to the present day.



Photo by Mariana Pinto dos Santos

THE MANOR HOUSE

The Manor House - Portugal, Brazil and Goa. Anatomy of the interiors was a FCT project whose primary goal was to study the houses of the nobility and high bourgeoisie between the 17th and 19th centuries, focusing on the multiple aspects of their interiors in three regions of the Luso-Brazilian cultural and artistic world: Lisbon, Rio de Janeiro & Goa. On the website, which acts as a database, you can check the manor houses, consult various documentary sources, articles, case studies, a short glossary and an artists' dictionary.

The Institute of Contemporary History (IHC) is mostly dedicated to the study of 19th and 20th century history and is based in NOVA FCSH and in the University of Évora. The IHC team is made up of approximately 100 Integrated Researchers, distributed in four Research Groups, covering a wide range of historical objects: “Political History – Regimes, Transition and Memory”; “Economy and Society – State, Classes and Gender”; “Culture – Power, Mediations and the Arts”; “History of Science, Technology and the Environment”.

IHC also includes other structures that contribute to our research: the Platform of Advanced Studies, which supports PhD students with a seminar, a summer school and a doctoral workshop; the Joint International Workshops, that insert the IHC in international debates in historiography and other social sciences; the History in the Public Sphere Program, that preserves our long-standing tradition of participation in public history; the Digital Humanities Laboratory, a key tool for researchers and projects; the Contemporary History Press, a reference in the publication of Open Access historiography.

We are also a member of IN2PAST, the first Portuguese Associated Laboratory in the area of the Humanities, expanding our intervention in public debates and policies of memory.

203
BOOKS

559
BOOK CHAPTERS

484
ARTICLES

182
SCOPUS ARTICLES

IHC.FCSH.UNL.PT



AMÍLCAR CABRAL: FROM POLITICAL HISTORY TO THE POLITICS OF MEMORY

This FCT-funded project researched the political language, transnational networks, and metabiography of Amílcar Cabral, a leader of anti-colonial struggle. Headed by Rui Lopes, it included a multinational team of researchers and allowed for the IHC’s repositioning in the field, foregrounding the history of anti-colonialism along with that of colonialism. The project led to public initiatives like a major exhibition on Cabral and his “afterlives”.

REWIND

Alba Comino’s project (MSCA) studies the construction of discourses around European cultural heritage, focusing on travel literature written by Latin-American women from the early 20th century. Using an interdisciplinary methodology based on geospatial tools and corpus linguistic analysis, combined with gender decolonial approaches, she aims to protect and transfer a cultural legacy that reflects the memories and subjectivities of a diverse society.



FIREUSES : BURNING LANDSCAPES

Led by Miguel Carmo and Ana Isabel Queiroz, this project (FCT) pioneered research on the modern history of large-scale wildfires. It brings together different disciplines, from environmental sciences to social history and history of science, to explore the origins of the current regime of fires. Fire is placed at the centre of a composite research on the latest Portuguese rurality, unfolding unexplored socioecological and politico-scientific links, and a history of the uses of fire.



(FIREUSES): Leandro Rolim (CC BY-NC-SA 2.0)



inet^{MD}

instituto de etnomusicologia
centro de estudos em música e dança

The Institute for Ethnomusicology – Centre of Studies in Music and Dance (INET-md) is a research unit built on the integration of arts, humanities and sciences. Founded in 1995, INET-md has since invested in partnerships with communities, scholars, artists, policymakers and non-academic institutions in pursuit of democratic and decolonial constructions of knowledge.

Research activities take place within and across the following six research groups: Ethnomusicology and Popular Music Studies; Historical and Cultural Studies in Music; Dance Studies; Creation, Performance and Artistic Research; Music Acoustics and Sound Studies; and Education, Music and Theatre in the Community. The achievements of INET-md encompass groundbreaking ethnographic and historical work on expressive practices of music and dance; studies of their manifestation and preservation, attending to political implications and worldwide interconnections; explorations of dance and music as embodied social practices; the study of formal and non-formal pedagogical approaches in these areas; experimentation in artistic research; and acoustic profiling of musical instruments. Headquartered at NOVA University Lisbon, INET-md has branches at the University of Aveiro, Lisbon University and Polytechnic of Porto.

175
BOOKS

365
BOOK CHAPTERS

448
ARTICLES

71
SCOPUS ARTICLES

INETMD.PT



Photo by Sofia Vieira Lopes

CRITICAL APPROACHES TO HERITAGE PRESERVATION AND RESTITUTION

INET-md is committed to assess changing paradigms of cultural policies and their impacts on local expressive practices and identities. Working with different institutions and communities of practitioners has produced significant collaborations related to the inscription of dance and music on both the national inventory (Reisadas, Fala de mulheres, Bombo and Tunas) and on UNESCO's both World Heritage List (Carillions of Mafra Palace) and Representative List of Intangible Cultural Heritage (Fado, Cante Alentejano and Chopi Timbila).



Photo by : Andreia Parente

INTERNATIONAL POSITIONING

INET-md is embedded within outstanding international networks, fostering a culture of excellence in advanced training, interdisciplinary research, performance, creation, and artistic research. Its leading position is widely acknowledged, as was noted throughout the 46th World Conference of ICTM(D), the largest and most prestigious scholarly organisation in ethnomusicology and traditional dance studies, hosted by INET-md at NOVA FCSH, in Lisbon in 2022, in the aftermath of the COVID-19 pandemic.



Photo by Guillermo de Llera Blanes

HEADING TO THE FUTURE

INET-md is now invested in consolidating its achievements of the last three decades by addressing challenges involving the academic community and other stakeholders. Thus, the interdisciplinary profile of the established research groups will gain depth through four thematic lines recently created to foster collaboration in strategic areas: Heritage(s), Archives and Museums; Studies on Women, Gender and Sexuality; Power, Politics and Activism; and Digital and Technological Performativities.



The Portuguese Institute of International Relations (IPRI-NOVA), established in 2004, stands as a cornerstone of scientific research and knowledge production in Portugal, within the ever-evolving landscape of Political Science and International Relations. Its broad mission is to contribute to the advancement of knowledge, the training of future generations of scholars, and the promotion of informed debates on governance issues across public spheres.

IPRI-NOVA's Strategic Plan encompasses 3 key areas where the core objectives of the Institute overlap: i) promote a top-level, engaged, and inclusive research community to achieve excellence in interdisciplinary research; ii) foster social scientific innovation and knowledge to develop scientific careers; iii) maximise societal impact to contribute to Knowledge transfer.

To optimize focus and to promote knowledge exchange as well as to ensure the incorporation of diverse perspectives into projects, as well as facilitating the networking of researchers at all career stages, IPRI-NOVA's research will be structured under two comprehensive Hubs – International Politics and Comparative Politics – which derive in 4 joint Labs: i) Global and Transnational Challenges; ii) Institutions, Policies, and Political Change; iii) Foreign Policy, Security, and Defence; and iv) European Governance.

106
BOOKS

273
BOOK CHAPTERS

200
ARTICLES

151
SCOPUS ARTICLES

IPRI.UNL.PT



“ÓBIDOS’ SEMINARS” – IPRI-NOVA SUMMER SCHOOL

The Summer School is a three-day course organized by IPRI-NOVA and Óbidos Municipality on a yearly basis since 2004. The Courses, which gather renowned national and international scholars and Portuguese policy key players, are comprised of academic seminars, the presentation of original papers, and roundtables open to IPRI-NOVA researchers and PhD students and the general public. The Summer School has worked as an important tool for IPRI-NOVA to achieve one of its main objectives: the training of young researchers.



DEMOCRACY IN TIMES OF CRISIS: POWER AND DISCOURSE IN A THREE-LEVEL GAME (DEMOCRIS)

With an international team of political scientists, economists and argumentation scholars, DemoCris examined the process (the ‘how’) leading to the adoption of the reforms passed during the economic crisis. The research included a delimited study of the six countries most hit by the crisis with an in-depth study of the Portuguese case with a larger timeframe. It was published a book firstly in English, and translated to Greek and Portuguese., which was included in the short list for the UACES book award 2022.



RELAÇÕES INTERNACIONAIS JOURNAL

R:I is a quarterly journal published, in Portuguese, by IPRI since 2004, which addresses broad issues in current academic debates from a pluralistic and multidisciplinary approach. A yearly special issue is published in English. The journal is available in open-access and presents itself as an important tool of knowledge dissemination, both for Portuguese and international scholars. Through the opening of call for papers or the approval of proposed edited dossiers, R:I publishes original articles which are evaluated according to the double-blind peer review system.

A woman with long dark hair, wearing a black top, is standing in a library. She is holding an open book and looking down at it. The background consists of tall wooden bookshelves filled with books. The lighting is warm and focused on the woman and the book she is reading.

ASSOCIATE LABORATORY

Associate Laboratories' key feature is their strong orientation towards the design and implementation of public policies in areas associated with their expertise. Institutions that are recognised as Associate Laboratories, either as individual Research Units, or in consortia, sign contract programmes with FCT and see their funding strengthened. Since 2020, there are 40 Associate laboratories in Portugal, across all fields and disciplines.

A chemist, an art historian, a musicologist, an anthropologist, an archaeologist, an architect, an urban planner, an archivist, a museologist, a geologist, a biochemist and an historian walk into a bar... Thus goes the story of IN2PAST – Associate Laboratory for Research and Innovation in Heritage, Arts, Sustainability and Territory, the first in Portugal to combine the Social Sciences, Arts and Humanities with the Natural Sciences.

The only Associate Laboratory (AL) at NOVA FCSH, IN2PAST was granted the statute of AL in February 2021 and signed the programme contract with FCT at the beginning of 2022. The consortium is headquartered in the University of Évora and joins 5 Portuguese Universities and 7 R&D Units (RUs), four of which based at NOVA FCSH: CESEM, IHC, IHA, CRIA, CHAIA, Lab2PT, and HERCULES, IN2PAST's main RU.

IN2PAST brings together scientific fields, disciplines and facilities often set apart in academia, creating a perfect transdisciplinary environment for the study, dissemination and valorisation of tangible and intangible cultural heritage, as reflected in its 5 thematic lines of research: Science and Technology for Cultural Heritage; Landscape, Territories and Cultural Heritage; Museums, Monuments and Their Collections; Archives, from Preventive Preservation to Digitalization; and Cultural Transfers, Public Policies on Memory and Inclusive Citizenship.

IN2PAST – Associate Laboratory is funded by FCT under ref. LA/P/0132/2020 (DOI 10.54499/LA/P/0132/2020)

7
R&D UNITS

5
UNIVERSITIES

34
NEW RESEARCHERS
(SCIENTIFIC EMPLOYMENT)

+300
PHD RESEARCHERS

22
PHD PROGRAMMES

+300
PHD STUDENTS

IN2PAST.ORG



3D Model of San Giovanni Battista Church (Assemmini, Sardenha, Itália) © Fabio Sitzia

IN2FUTURE BOOT CAMP

Transdisciplinarity at work was one of the major accomplishments of IN2PAST's first Doctoral School, which took place in May 2024, in Évora, in partnership with Festival Imaterial and Évora 27 – European Capital of Culture. Providing 'a very different experience from the solitude of a doctorate' to 33 PhD students from IN2PAST's 7 RUs, the 'In2future Boot Camp: Towards an Ecology of Heritage Practices' led to 6 immersive collaborative anarchic proposals created from scratch in less than a week.



DRIVING RESEARCH

IN2PAST has funded 15 exploratory projects, totalling close to €150,000, involving +100 researchers and envisioning and driving IN2PAST's research toward critical advances in science and society. Topics include forensic heritages, matter and materiality, memory and contemporary art, tourism and local development, sustainable territories, identity negotiations, nanomaterials for music preservation, the Wardian Case, Van Goyen's paintings, Portuguese ceramics, indigenous digital repositories, King John IV's Musical Library or the digitisation of a Romanesque chapel.



Photo by Petra Nesti / Pexels

DIGITISING COLLECTIONS

IN2PAST is involved in the PRR (Recovery and Resilience Plan) project 'Digitisation of museum collections under the management of the DGPC and DRCs', a set of interventions with multiple beneficiaries, including museums and monuments, that will enable the former Directorate-General for Cultural Heritage and the Regional Directorates for Culture to systematically digitise unique, rare or at-risk collections on a large scale, which can then be made available to the public universally and free of charge.



COLLABORATIVE LABORATORY

Collaborative Laboratories are independent institutions whose fundamental mission is to foster a structured collaboration among its members, to pursue common research and innovation agendas. Impact creation, and more specifically economic and social impact, and qualified employment are key goals guiding CoLAB's actions. The recognition of this status is evaluated every five years, and it requires that their organisational structure include higher education institutions and economic agents, to actively establish bridges between them.

ATLAS OF VARIATION IN HEALTH OF THE NATIONAL HEALTH SYSTEM – 2018 -

<https://vohcolab.org/projects/atlas-of-variation-in-health-of-the-national-health-system-2018/>

VOH.CoLAB (Value for Health CoLAB) is a non-profit private organisation that emerged from a centralization of competencies and resources from its founding partners. It envisions a paradigm shift from healthcare delivery to Value-Based Healthcare, in which citizens' engagement is essential. VOH.CoLAB's Consortium brings together NOVA University Lisbon, the Fraunhofer Portugal Research (the academic partners), CUF SA (a private company providing health services) and Vodafone Portugal (private telecommunications operator, seeking new added-value connectivity products and services).

COM@REHAB: COMMUNICATION FOR INTERACTIVE REHABILITATION IN VIRTUAL REALITY

<https://vohcolab.org/projects/comrehab-post-covid19-rehabilitation-through-virtual-reality/>

From NOVA FCSH, two research units have developed research collaborations with this collaborative laboratory – CICS.NOVA, from Social Sciences, and CLUNL, from Linguistics. This involvement attests the relevance of Social Sciences and Humanities to create multidisciplinary approaches to complex issues and to boost innovation through participatory approaches.

VOHCOLAB.ORG



